
CB INKdraw UPGRADE

GUIDE TO UPGRADE OF CB INKdraw

This document described the procedures of upgrading CB INKdraw when a new release is issued.

Please follow this instruction carefully

Version 1

Last edit 2005-April-01 Torben Dam Jensen

What is a "Release"

A "Release" is a fully tested build of CB INKdraw, which includes new functions and fixes. It includes updated FPGA files ("software" for the CB board).

It is important that FPGA version and CB INKdraw version follow each other.

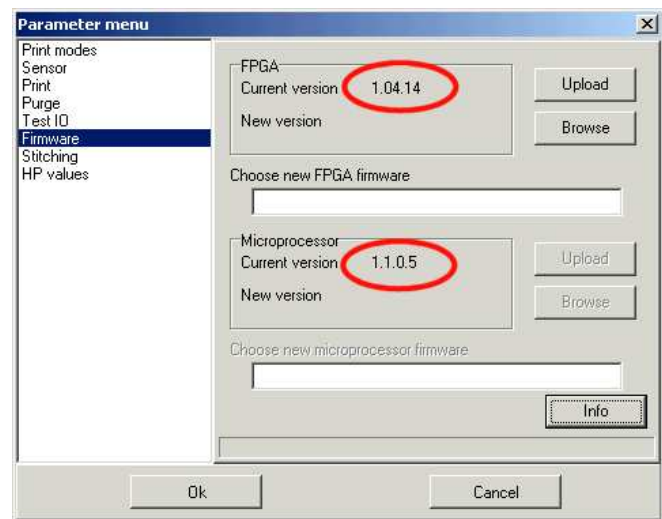
Version Checking

FPGA, microprocessor etc

To check version of FPGA, use the parameter menu (F9), and select the section **Firmware**

You will see a screen similar to the one illustrated here.

The version numbers in the circles should follow the version number of OBJ INKdraw. The two are bundled in one "release".



CB INKDraw

To find the version of CB INKdraw, select "Help" and "About"



Procedure to upgrade to a CB INKdraw release

How you receive the upgrade

The upgrade will be distributed in the form of a .zip file, which contains both the software, controller board drivers and firmware for the board.

This guide assumes that you have already installed your controller board and that everything is working.

Step 1: Unzip the files

- Download the release from our web page, and unzip the files into a location you know. For example **c:\temp\release**

Step 2: Upgrade firmware

- Start CB INKdraw and press F9 to go to parameter menu. Select "Firmware"
- Click "Browse" and find the firmware file from the location where you unzipped the release. This file type is "fpe"
You must select the type of firmware that matches your card type

- Click "Upload". Password to upload is service (please do not distribute this password)

This will start the upgrade process, which will take some minutes.

Once it is done, turn off the PC and let it stay off for about 10-20 seconds.

Step 3: Uninstall CB INKdraw

- Select control panel and Add/Remove programs.
- Find the entry for CB INKdraw, and select it to uninstall
- Your designs will not be removed by this

Step 4: Install CB INKdraw (new release)

- Open windows explorer and find the directory you unzipped the release into
- Open "setup.exe" and follow prompts to install CB INKdraw. You can install to the same directory as your previous installation.