

XJ126

Versatile Solution for Diverse Markets

Reliable, flexible and fast the XJ126's capability to work with a broad range of liquids across a wide range of applications makes it an ideal solution for many static and scanning uses.

Fast

The XJ126 runs at linear speeds of up to 660mm/s and can provide print coverage of up to 38 m² per hour¹. An internal surge control mechanism is integral, minimising the impact on print quality that may be caused by ink surges when a printhead is accelerated/ decelerated.

Adaptable

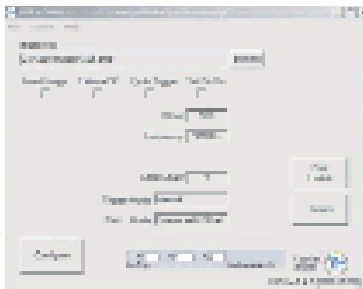
The XJ126 has advanced control logic functions and electronics that enable better tuning and flexible control of different ink characteristics.

Easy to set up and maintain

A solid Zinc frame with unique mounting brackets makes the XJ126 easy to mechanically mount and align. To further reduce set-up time the printhead possesses inlet/outlet ports, simplifying filling and exchange of inks.

Applications

Adaptable for a wide spectrum of applications this flexible printhead is supplied with a broad range of approved inks to provide customers with a rapid development route.



User friendly GUI interface

Product Specification

Parameter	XJ126-200	XJ126-300
Quality		
Printhead resolution	200dpi	300dpi
Channel resolution	185	185
Typical drop volume	80pL	50pL
Typical drop placement accuracy	0.7P	0.7P
Speed		
Max fire frequency	5.2kHz	7.5kHz
Linear speed ²	660mm/s	635mm/s
Physical		
Dimensions	45mm W x 43mm D x 11.8mm H	
Print swathe width ³	15.9mm	10.3mm
No. of addressable channels	126	126
Head weight (dry)	35g	35g
Optimal print distance	1mm	1mm
Ink	Oil, UV, Solvent	Oil, UV, Solvent

- 1 Single pass
- 2 At specified print resolution
- 3 At printhead angle conforming to printhead resolution

Xaar plc
Science Park
Cambridge
CB4 0XR
United Kingdom

Tel: +44 (0) 1223 423663
Email: info@xaar.co.uk
Web: www.xaar.co.uk