

The MP-series of *jetStamp*-Family

Printing on special surfaces like metal and plastic!

Electronic handstamp. Prints one or two-line impression with text, number, date and time, quickly and quietly on all even and uneven surfaces, forms, bundles of documents and envelopes.

Print with the MP-Series of the *jetStamp*-Family special surfaces like metal and plastic too. The special quick-drying ink prevents from smearing on stamped items.

The MP-Series of *jetStamp*-Family is specially qualified for marking on:

- Industrial or manual produced parts of metal and plastic
- Affixing of best-before date on glossy boxes

Version:

- **jetStamp 790 MP**
Mobile electronic hand stamp for a wide variety of applications
- **jetStamp 791 MP**
Click & Stamp: the software that allows you to pick up messages from Excel and Word files
- **jetStamp 792 MP**
Suitable for automatic applications, e.g. installed in production lines



Award for Operational Excellence

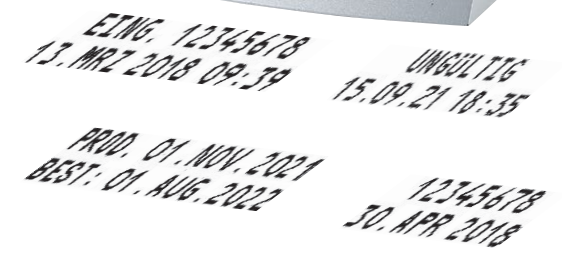
kiwa
geprüft & zertifiziert



jetStamp 790 MP
791 MP/792 MP

REINER
www.reiner.de

jetStamp 790 MP
791 MP/792 MP
The flexible...



jetStamp 790 MP/791 MP/792 MP The flexible...

Prints quickly and quietly on all even and uneven areas, mobile or stationary. With the MP series of the *jetStamp*-Family, special surfaces such as metal and plastic can also be printed.

Description

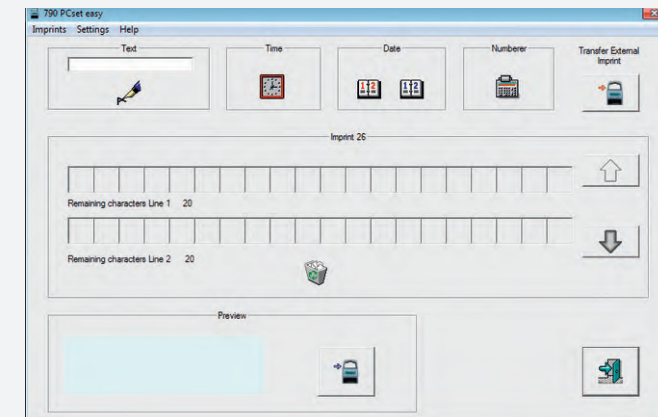
- Number, date, time and text in one- and two-line prints
- Fonts of narrow to wide (max. 20 characters per line, max. print width 42 mm)
- Simple menu guidance through user-friendly LCD display
- Various prints stored in the stamp
- Up to 4 individual texts or special functions are possible
- 25 different prints are stored in the system
- On request, the 790 MP/792 MP is also deliverable with 10 freely programmable memory spaces (MARKER 10). No stored prints.
- Suitable for machine use, e.g. integration in production lines (*jetStamp* 792 MP)

Technical data

- Dimensions *jetStamp*: 80 x 96 x 170 mm (L x W x H)
- Dimensions charging station: 141 x 115 x 36 mm (L x W x H)
- Weight: approx. 450 g
- Character font: max. 20 characters per line
- Figure size: 3.2 mm
- Line pitch: 4.7 mm
- Print technology: inkjet



Prints easily, quickly and quietly on all even and uneven surfaces.



The Software for the *jetStamp* is self-explanatory. Define text, date, time and/or numbering on your PC, and pass via the USB cable!

